

LASER SCANNER SURVEYS OF MNAJDRA TEMPLES , QRENDI – MALTA



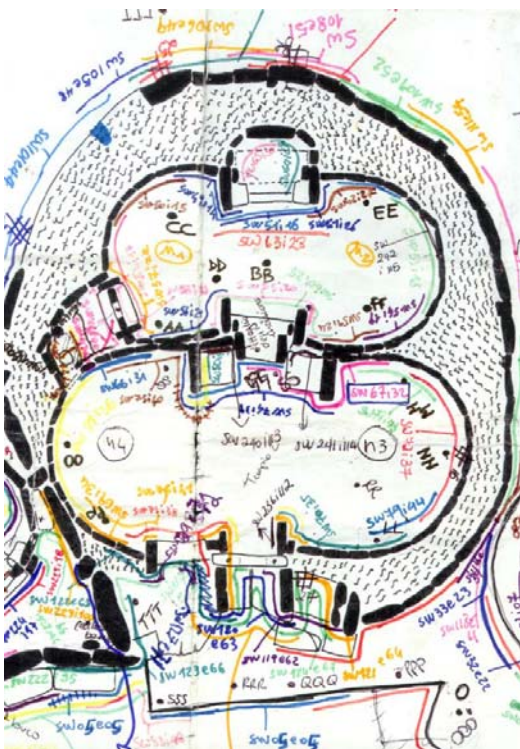
The Government of Republic of Malta and Heritage Malta had commissioned on 2005 a detailed survey of Mnajdra temples. The objective was to obtain a three dimensional computer generated virtual model of the structure. Due to the characteristic morphology of the monument, the laser scanner technology was the only available to reach the above mentioned objective. Mapped models, plans, sections and elevations were worked out as well as contours maps.

Using a laser scanner Leica HDS2500 were collected more than 70.000.000 points
For a total amount of 250 scans.



Principal working phases:

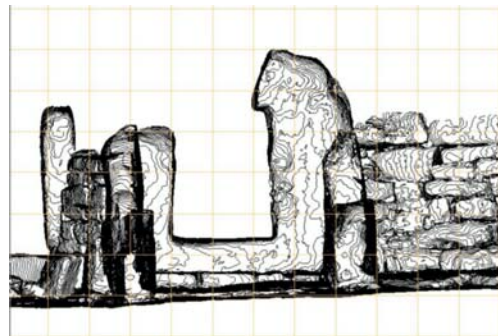
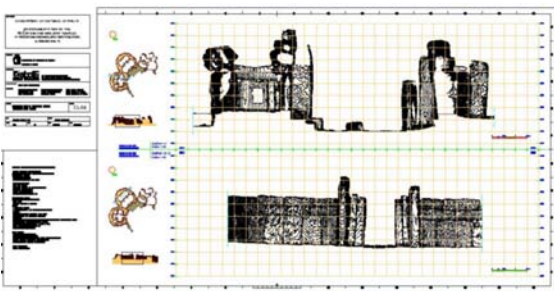
- Topographical survey
- Data acquisition
- Post processing
- Creation of the georeferenced and mapped 3D model
- Creation of the digital ortophoto plans, sections and contour lines



Views of the site, scans plan and points clouds



Mapped model and horizontal sections



Vertical sections of the mapped model and contours final layouts